

Brick in Architecture Award Winner
Paving & Landscape Architecture

Kings Court Haddonfield, NJ

Architect: **Alberto & Associates**

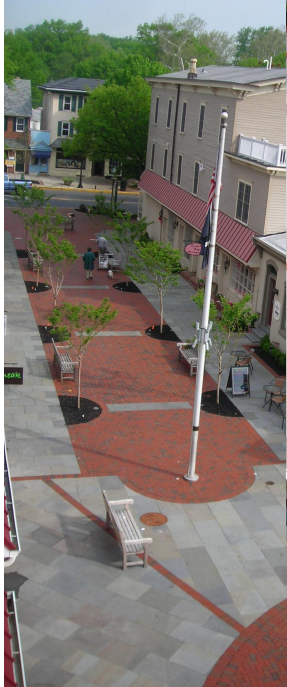
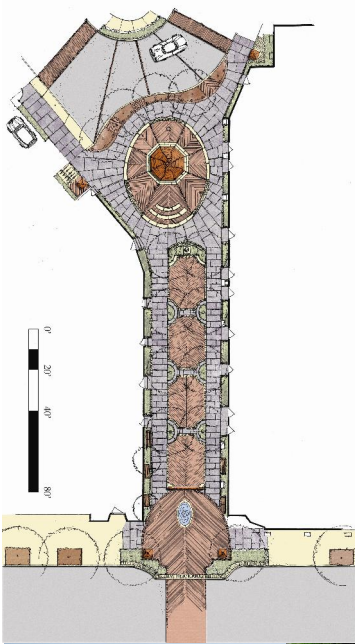
Landscape Architect: **Knolltop Nursery**

Associate Architect: **Remington & Vernick
Engineers**

Manufacturer: **Pine Hall Brick Company, Inc.**

Distributor: **Church Brick Company**

Mason Contractor: **Think Pavers Hardscaping**



Kings Court is an 11,000 square-foot plaza that anchors one end of the pedestrian-friendly main street of Haddonfield, New Jersey, which attracts visitors from throughout the region to its Colonial-

era buildings. Today, residents and visitors to Kings Court are enjoying a number of recent upgrades and repairs, thanks to a public/private cooperative renovation of the plaza.

Designers of Kings Court chose clay brick pavers for both aesthetic and functional reasons. The natural appearance of clay brick pavers are in keeping with the Colonial-era surroundings and their color never changes over time. The design itself even adds to the visitors' experience, with directional herringbone patterns that encourage movement toward the plaza, while paver and stone patterns and borders define areas of rest and activity.

www.americaspremierpaver.com

